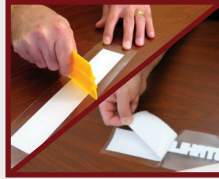


INSTA Print



FEED MATERIAL
 into plotter/
 cutter so that
 the media faces
 up.



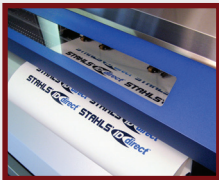
PLACE MASK over the
 graphic, making sure to
 smooth out any air bubbles.

*Note: Graphic should be masked
 immediately after weeding.*

REMOVE BACKING

Description

For use with solvent and eco
 solvent print and cut systems.
 CAD-COLOUR® INSTA Print is a thin
 material that offers superior quality
 with a soft hand and great stretch.



PRINT DESIGN
 in
 positive form.



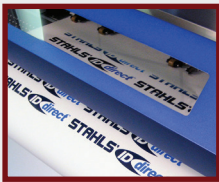
PREHEAT & POSITION
 Preheat garment for 10
 seconds, prior to application.
 Position & place cover sheet
 over graphic.

*Note: Pre-heating polyester
 garments is not recommended.*

Recommended Fabrics

Cotton*
 Polyester*
 Poly/cotton blends*
 * best choice

*Due to the combination of fabrics, weaves,
 coatings and dyes used in the textile industry,
 Stahls' recommends and provides samples
 of our materials and medias for testing.*



CUT DESIGN
 Designs may be
 cut immediately.



HEAT APPLY
 Temperature: 300°F; 149°C
 Time: 15 seconds
 Pressure: medium
 #4-6 on Hotronix®

*Tip: A Heat Printing pillow or Print
 Perfect Pad is recommended
 for even pressure when working
 around zippers, buttons, heavy
 seams or mesh reversible jerseys.*

Accessories Required

CAD-COLOUR® Magic Mask – Medium Tack
 Kraft Paper or Reusable Cover Sheet
 EZ Weeder® or Tweezers



WEED Away
 the excess
 media.



PEEL
 Wait 5 seconds
 Peel Mask WARM

Cutting Notes

Be sure to perform test cuts to
 ensure proper blade depth when
 cutting. Cutting too deep will result in
 weeding or masking difficulties.

Care Instructions

For best results, turn garment inside
 out. Machine wash warm or cold
 using mild detergent. Do not bleach.
 Do not iron directly on transfer. Tumble
 dry low setting. Do not dry clean.

Storage

If designs will not be heat applied
 immediately, return masked designs
 to paper backing for storage. Avoid
 humid spaces and extreme changes
 in temperature.

CUTTER GUIDELINES

CUTTER	BLADE	FORCE	OFFSET	SPEED
Roland VP-300	45° / 60°	90g / 65-75g	0.25	30cm/s
Roland GX-24 Roland GS-24	45° / 60°	100-120g	0.25	20cm/s

All technical information and recommendations are based on tests we believe to be reliable. However, we cannot guarantee performance for conditions not under manufacturer's control. Before using, please determine the suitability of product for its intended use. The user assumes all risk and liability whatsoever in connection with the use of this product. Seller's and manufacturer's only obligation shall be to replace such quantity of the product proved to be defective by manufacturer.

CAD-CUT, CAD-COLOUR, Solutions & Hotronix are trademarks & ® trademarks of Stahls' ID Direct™
 with one or more patents or patents pending.

© Stahls' ID Direct™ 2014 - All International Rights Reserved