

# Media Profile Collection for Roland<sup>®</sup> VersaWorks:

## Installing RML Files



**Step 1:** Select the profile from the Stahls' site that you want to download.

US Customers:

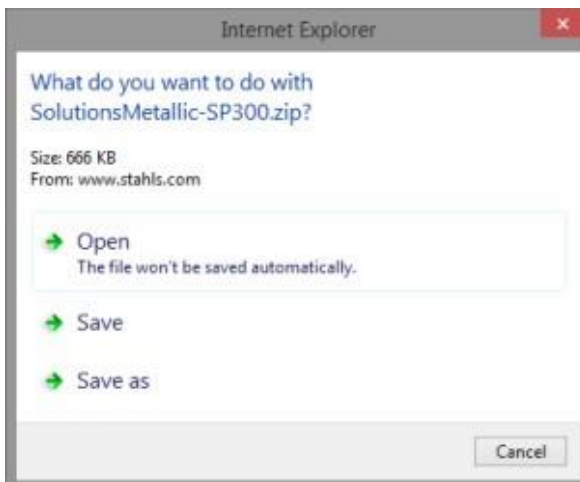
<http://www.stahls.com/versacamm-media-profiles>

CA Customers:

<http://www.stahls.ca/versacamm-media-profiles>



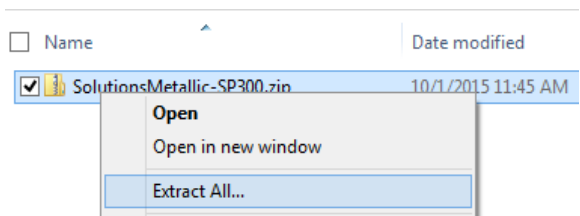
**Step 2:** A box will appear, allowing you to Open or Save the file. Click Save As and select where you want to save the file on your computer.



**Step 3:** Go to where you just saved the file.

Right-click on the file and a menu will appear.

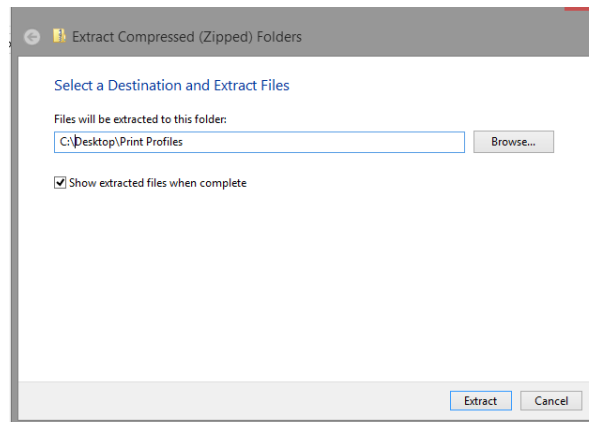
Select **Extract All**.



**Step 4:** A box will appear and will ask you where you want to save the files.

Pick where you want the files to be saved.

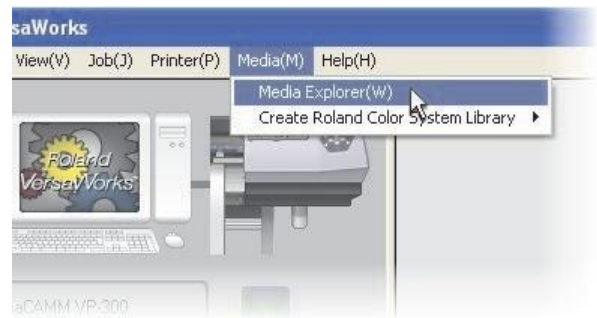
Select **Extract**.



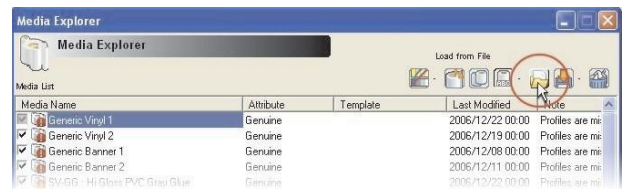
CONTINUED...



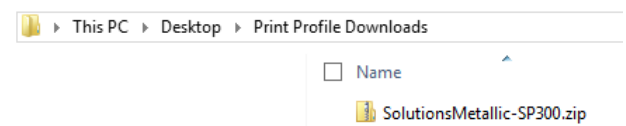
**Step 5:** Start VersaWorks and highlight **Media(M)**. Then select **Media Explorer**.



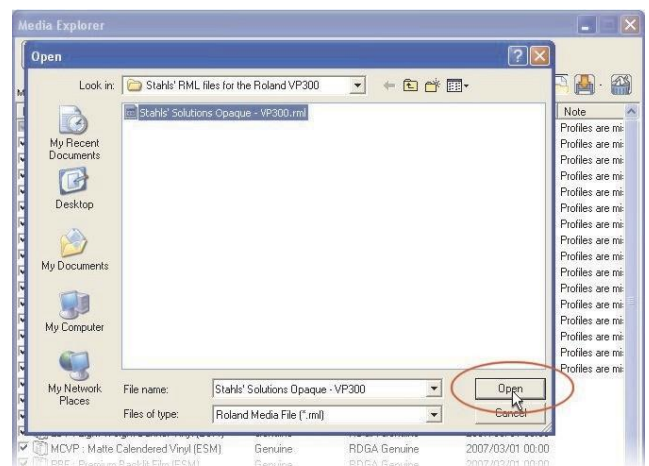
**Step 6:** When Media Explorer opens, Click the Load from File icon.



**Step 7:** Navigate to the file location where you just saved the file in Step 2.



**Step 8:** Navigate to the **Stahls' RML files for the Roland VP300** folder and select the RML file you want to install and then click **Open**.

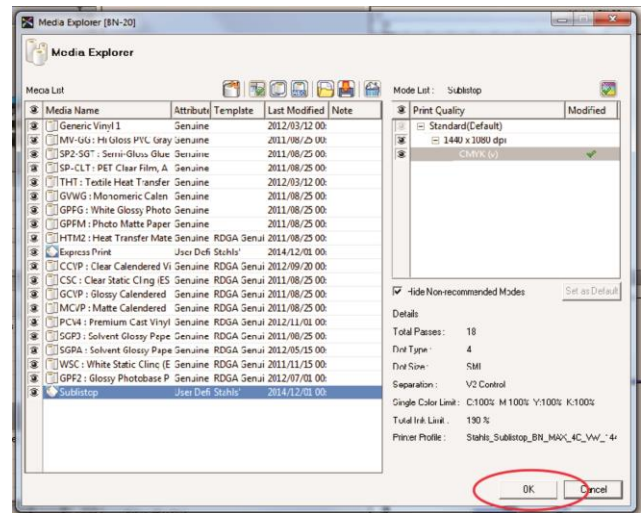


CONTINUED...



**Step 9:** The **Import Media** dialog box will open. Select the media to open from the list.

**Step 10:** When finished, click **OK** in the bottom right-hand corner.



**Step 11:** VersaWorks will ask if you want to apply the changes. Click **Yes** to continue.

