

THERE ARE **HEAT PRESSES** AND THEN THERE'S  
**HOTRONIX®**



STAHL'S  
**Hotronix®** 

**PRODUCT CATALOG**

# PROUDLY MADE IN THE USA

Born from the specific requirements of heat transfer materials, Hotronix® has been taking the guesswork out of heat applying since the 1980s. Now stronger and more advanced than ever, Hotronix® continues to engineer and produce the world's best-selling heat presses and accessories.

Proudly made in the USA, Hotronix® looks to the future of heat press innovation in an ever-changing industry to help your business become an efficient, profit-generating machine.

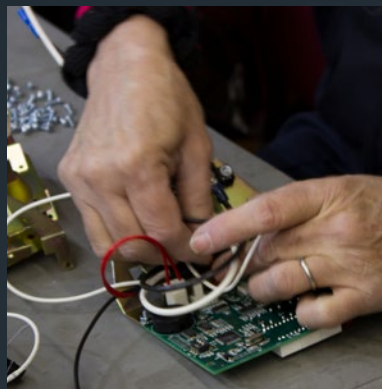
STAHL'S  
**Hotronix®**



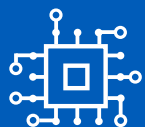
INDUSTRY  
INNOVATORS



BLUE RIBBON  
CUSTOMER SERVICE



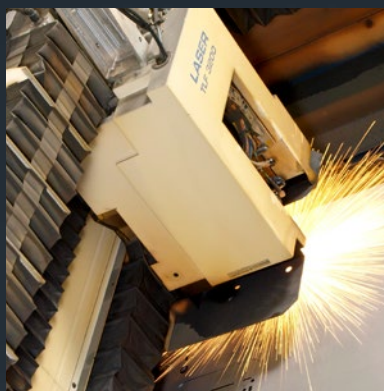




TECHNOLOGY  
DRIVEN



MADE  
IN THE USA



## More Than a Heat Press 4-5

### 360 IQ® Hat Press 6

### Tag Along HP Platen 7

### Power Platen™ 7

## Hotronix® Heat Presses 8-11

Dual Air Fusion IQ® 8

Air Fusion IQ® 9

Table Top Air Fusion IQ® 9

Fusion IQ® 9

Auto Open Clam 10

Auto Open Cap 10

LowRider 10

The MAXX® Clam 11

The MAXX® Cap 11

Craft Heat Press 11

Warranty 11

## Accessories 12-13

Laser Alignment System 12

Heat Press Caddie™ Stand 12

EZ Weeding™ Table 13

Heat Printing Equipment Cart 13

Foam Cover Pad 13

## Platens 14-15

The Right Platen for Your Heat Press 14

Quick Change Platens 15

Interchangeable Cap Platens 15

Platen Covers 15

## Contact 16

# MORE THAN A HEAT PRESS

Every Hotronix® FUSION® comes equipped with the new Fusion IQ® control board that features advanced wireless technology, letting you interact with your heat press anywhere at any time with the web-based portal. This line of technologically advanced presses provide your business with insights into job and operator performance, allowing you to make proactive, data-driven changes in real time.



# HOW DID THE WORLD'S BEST-SELLING HEAT PRESS GET EVEN BETTER?



By Adding Wireless Technology So You Can  
Manage Your Business From Anywhere.

## **TRACK HEAT PRESS USAGE**

Make sure you're getting the most out of your heat press. Track how much time your heat press is working vs. sitting idle.

## **DISCOVER THE PRODUCTIVITY OF EACH HEAT PRESS**

Access real-time reporting and adjust your production capacity as needed.

## **TRACK THE PERFORMANCE OF EACH EMPLOYEE**

Gain insight into when and how your employees are working, if there are any application issues, and manage permissions for accurate application without added supervision.

## **FOLLOW TOTAL IMPRESSIONS**

The Fusion IQ® measures every preheat and every heat application so you stay up-to-date on the number of times your heat presses were engaged.

## **UTILIZE PRESET APPLICATIONS FOR POPULAR ITEMS**

Eliminate mistakes with factory-installed presets, or create your own to accurately apply the types of transfers and films your customers are ordering.

## **SET UP EXCEPTIONS**

See how many times an operator went outside a preset application. Avoid production missteps to maintain the quality and durability of your products.



# INTRODUCING THE 360 IQ® HAT PRESS

## HIGH PROFIT, HIGH IMPACT HATS. ONE MACHINE.

Successfully print on all sides of a hat without removing it from the press. The one-size-fits-all molded platen eliminates crease lines, and a heated lower platen makes it the perfect solution for applying emblems, appliqué, and patches. Best of all, it comes equipped with advanced IQ® technology allowing you to track your business in real time.

## FEATURES & BENEFITS

### UPPER & LOWER HEAT

Heat from the lower platen makes application of dimensional emblems and embroidered or leather patches easy with dependable, quality results.

### 360° PRINTING

Print the front, back, and sides without removing the hat from the platen. No need to change platens with the one-size-fits-all platen. More Placements = More Profit.

### NO HEAT PRESS CREASE

The uniquely designed molded lower platen forms to the shape of any hat, eliminating the heat press crease on decorated hats.

### NO SCORCHING

Control the upper and lower platens independently. Reduce heat from the upper platen to protect the hat.

### 360 IQ® Hat Press

120 volt • 10 amps / 800 watts  
240 volt • 5 amps / 800 watts  
Shipping: 50 lbs. • 25"L x 14"W x 25"H



# HOTRONIX® TAG ALONG™ HP PLATEN

## DOUBLE THE PRINTING CAPABILITIES

The Tag Along™ HP Platen, a patented design of Livingston Systems, gives you the power to quickly apply tagless labels and full shirt fronts at the same time. The 16" x 15" full front print area allows you to apply many different size transfers, and its innovative design helps you load shirts straight for accurate placement, every time.



## FEATURES & BENEFITS

### ONE PLATEN, 2 PRINT LOCATIONS

Easily print front and inside tag locations with just one press.

### ADDED EFFICIENCY

One-step heat application will save you time and labor.

### EASY ALIGNMENT

Helps you load garments straight for accurate positioning every time.

### 16" x 15" PRINT AREA

The large full front print area is the perfect size for a variety of transfers.

### TAG ALONG™ HP PLATEN (Quick Slip Pad Protector included)

Shipping: 23 lbs. • 26"L x 20"W x 5"H

*Compatible with 16" x 20" Maxx Clam and Hotronix® 16" x 20" Auto Clam, Hover Press, Fusion IQ®, Table Top Air Fusion IQ®, Air Fusion IQ®, and Dual Air Fusion IQ®.*

# HOTRONIX® POWER PLATEN™

## THE POWER TO ELIMINATE SCORCHING — FOR GOOD.

The Power Platen™ applies heat directly beneath the transfer for a quicker bond between adhesive and fabric, applying less heat to the face of heat-sensitive garments. Compatible with 16" x 20" Hotronix® Auto Clam, MAXX® Clam, and Air Fusion IQ® heat presses\*, the Power Platen™ is available in four interchangeable sizes, each with a built-in pillow for the right fit, no matter what you're decorating.



### Controller

120 volt • 6.3 amps / 750 watts  
240 volt • 3.2 amps / 750 watts  
Shipping: 5 lbs. • 10"L x 8½"W x 8¾"H

### 6" x 6"

120 volt • 0.7 amps / 88 watts  
240 volt • 0.4 amps / 88 watts  
Shipping: 6 lbs. • 6½"L x 6½"W x 4¾"H

### 16" x 20"

120 volt • 6.3 amps / 750 watts  
240 volt • 3.2 amps / 750 watts  
Shipping: 26 lbs. • 16¾"L x 20½"W x 4¾"H

### 6" x 20"

120 volt • 2.3 amps / 275 watts  
240 volt • 1.1 amps / 275 watts  
Shipping: 12 lbs. • 6½"L x 21"W x 4¾"H

### 11" x 15"

120 volt • 3.3 amps / 390 watts  
240 volt • 1.6 amps / 390 watts  
Shipping: 13 lbs. • 11¾"L x 15½"W x 4¾"H

### Power Platen™ Family (Includes Controller)

Shipping: 62 lbs. • 26"L x 20"W x 14"H

Requires a dedicated 20-amp circuit / 2-year warranty on controller / 1-year warranty on all other parts

*\*Not compatible with Hotronix® Fusion IQ® or draw presses. One or more patent and/or patents pending.*

# HOTRONIX® HEAT PRESSES

## DUAL AIR FUSION IQ®

### PRODUCTIVITY OPTIMIZED

Built for ultimate heat printing efficiency, the Dual Air Fusion IQ® provides the functionality of two presses with dual 16" x 20" workstations. Program the press to preheat on station A and complete final application on station B, automatically adjusting time and pressure as it shuttles between workstations. It's a smooth, quiet, and effortless operation controlled by the push of a button and tap of the foot pedal. Simply power on and choose between dual or independent operation.

The Dual Air Fusion IQ® also comes standard with a Laser Alignment System, assuring your job is on target every time. The laser system seamlessly integrates into each workstation and is controlled entirely through the touch screen.

#### Dual Air Fusion IQ® (2) 16" x 20" Platens

240 volt • 15 amps / 3500 watts

Shipping: 410 lbs. • 45"L x 45"W x 30"H

*Requires air compressor (not included) with minimum 1 horsepower and 8 gallon hold tank. Uses 3.8 CFM.*





# AIR FUSION IQ®

## AIR POWERED FOR EFFORTLESS OPERATION

The Air Fusion IQ® offers a two-button operation which locks the upper platen down, applying accurate, even pressure, then automatically swings open to create a heat-free workspace. Patented Auto Adjust Pressure™ automatically adjusts to the thickness of the item you're printing. Program your time to change from preheating to final application. With up to four time and pressure settings, it's not just possible — it's automatic.

### Air Fusion IQ® 16" x 20"

120 volt • 15 amps / 1800 watts

240 volt • 7.5 amps / 1800 watts

Shipping: 245 lbs. • 40"L x 48"W x 58"H

*Requires air compressor (not included) with minimum 1/2 horsepower and 2.5-gallon hold tank. Uses 2.3 CFM.*



# TABLE TOP AIR FUSION IQ®

## SPACE-SAVING TABLETOP DESIGN

Take everything you love about our Fusion IQ®, add the power of an air compressor, the compact size of a tabletop heat press, and you have the Table Top Air Fusion IQ®. With an upper platen that operates with the touch of a button, operator fatigue is a thing of the past.

### Table Top Air Fusion IQ® 16" x 20"

120 volt • 15 amps / 1800 watts

240 volt • 7.5 amps / 1800 watts

Shipping: 180 lbs. • 37"L x 24"W x 24"H

*Requires air compressor (not included) with minimum 1/2 horsepower and 2.5-gallon hold tank. Uses 2.3 CFM.*



# FUSION IQ®

## #1-SELLING HEAT PRESS WORLDWIDE

In the decorating business, it's all about customization, and that's what we had in mind when we engineered the Fusion IQ®. Switch between the draw and swing motions depending on workspace, user preference, or garment. Touch screen technology allows you to program an unlimited number of presets. Add the compatibility of optional Quick Change Platens, and you'll be decorating more than ever.

### Fusion IQ® 16" x 20"

120 volt • 15 amps / 1800 watts

240 volt • 7.5 amps / 1800 watts

Shipping: 150 lbs. • 37"L x 25"W x 24"H



## AUTO OPEN CLAM - 11" X 15"

The 11" x 15" Auto Open Clam is perfect for shops with limited space. This lightweight, compact design is also a great choice for heat printing at off-site events.

### 11" x 15"

120 volt • 8.3 amps / 1000 watts

240 volt • 4.5 amps / 1000 watts

Shipping: 72 lbs. • 36"L x 25"W x 21"H



## AUTO OPEN CLAM - 16" X 16"

The 16" x 16" Auto Open Clam is a popular choice and favored by many shops that print full-size transfers.

### 16" x 16"

120 volt • 15 amps / 1800 watts

240 volt • 7.5 amps / 1800 watts

Shipping: 90 lbs. • 36"L x 25"W x 21"H



## AUTO OPEN CLAM - 16" X 20"

This best-selling full-size clam's large surface accommodates the application of names and numbers on jerseys, allover sublimation prints, and oversized transfers. Compatible with nearly every optional Quick Change Platen, it's the most versatile heat press available.

### 16" x 20"

120 volt • 15 amps / 1800 watts

240 volt • 7.5 amps / 1800 watts

Shipping: 100 lbs. • 36"L x 25"W x 21"H



### Also available in a hover model.

Order the Auto Open Clam as a Hover Press™, which is designed for curing inks during the DTG decorating process. Switch from Hover to Auto Open mode as needed.

### Hover Press™

120 volt • 15 amps / 1800 watts

240 volt • 7.5 amps / 1800 watts

Shipping: 100 lbs. • 36"L x 25"W x 21"H

## AUTO OPEN CAP

Decorate with the reliability and accuracy of our Auto Open Cap press. A cap hold-down device pulls the front of the cap taut, securing it while providing a smooth surface for heat application. Decorate a variety of cap styles with four optional Quick Change Platens.

### Auto Open Cap

120 volt • 4 amps / 500 watts

240 volt • 2 amps / 500 watts

Shipping: 41 lbs. • 26"L x 15"W x 21"H



## LOWRIDER

The lightweight, compact design makes this clamshell press the perfect choice for mobile heat printing opportunities. Even, edge-to-edge heat and pressure gives you the confidence to heat print on small areas.

### LowRider 6" x 6"

120 volt • 3 amps / 360 watts

240 volt • 1.5 amps / 500 watts

Shipping: 41 lbs. • 26"L x 15"W x 21"H



## THE MAXX® CLAM

The MAXX® is the best-selling low-cost heat press. Trust these budget-friendly machines to outperform every press in their class.

Whether you're just getting into heat printing, heat printing part time, or need a back-up press, these durable machines are the perfect partner.

### 11" x 15"

120 volt • 8.3 amps / 1000 watts

240 volt • 4.5 amps / 1000 watts

Shipping: 72 lbs. • 36"L x 25"W x 21"H



### 15" x 15"

120 volt • 15 amps / 1800 watts

240 volt • 7.5 amps / 1800 watts

Shipping: 78 lbs. • 36"L x 25"W x 21"H



### 16" x 20"

120 volt • 15 amps / 1800 watts

240 volt • 7.5 amps / 1800 watts

Shipping: 104 lbs. • 36"L x 25"W x 21"H



## THE MAXX® CAP

This manually operated clamshell design is economical and easy to operate. The MAXX®Cap offers a digital time and temperature display, and a cap hold-down device keeps caps securely in place during heat printing.



### The MAXX® Cap

120 volt • 4 amps / 500 watts

240 volt • 2 amps / 500 watts

Shipping: 41 lbs. • 26"L x 15"W x 21"H

## CRAFT HEAT PRESS

This affordable and compact Craft Heat Press is the perfect solution for home crafting and hobby spaces. It is lightweight, durable and features easy-to-use technology to help you get started in a workspace of any size.



### The Craft Press

120 volt • 7 amps / 800 watts

Shipping: 37 lbs. • 12 3/4"L x 17 1/4"W x 12 1/2"H

## STAHL'S HOTRONIX® PREMIER WARRANTY

*Lifetime on heating element  
5-year on framework  
2-year on circuit board  
1-year parts and labor  
Free lifetime technical support*

## STAHL'S HOTRONIX® MAXX® WARRANTY

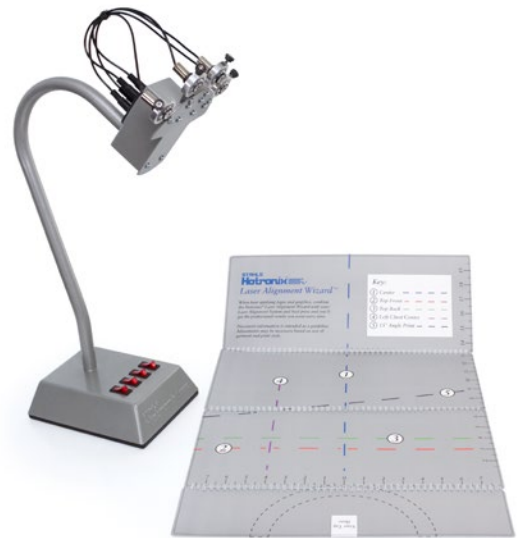
*Lifetime on heating element  
1-year parts and labor  
Free lifetime technical support*



# HEAT PRESS ACCESSORIES

## HEAT PRESS LASER ALIGNMENT SYSTEM

For fast, accurate, and precise placement, choose the Hotronix® Heat Press Laser Alignment System. This tabletop unit features four adjustable lasers and is compatible with any brand of heat press. Included is the Laser Alignment Wizard™, a heavy-duty, spiral-bound template with five popular layouts. Simply align each bulb to the guides for accurate positioning.



## HEAT PRESS CADDIE™ STAND

The Heat Press Caddie™ Stand is an adjustable pedestal stand that converts any Hotronix® Auto Open or MAXX® Clam into a threadable heat press. Self-leveling casters provide portability and stability, allowing you to take advantage of mobile heat printing opportunities.

*Also available in a countertop version.*



## EZ WEEDING™ TABLE

The bond between a heat transfer material and its carrier lessens when heated. This patented table heats materials slightly to promote removal from the carrier, resulting in easier weeding with less material breakage.

- 20" x 36" weeding area — a full yard of weeding production
- Three temperature settings — 110°F for fine-detailed designs, up to 130°F for maximum productivity on larger jobs
- Top clamp holds materials in place while weeding
- Built-in storage compartment
- Fits most production tables and countertops

Actual Weight: 27 lbs.

Shipping Weight: 28 lbs.

Dimensions: 39"L x 27.5"W x 4"H (Closed)

Dimensions: 39"L x 27.5"W x 17"H (Open)

Shipping Dimensions: 31"L x 43"W x 8"H



## HEAT PRINTING EQUIPMENT CART

Add more counter space to your shop with this heavy-duty steel cart. Designed to hold the Dual Air Fusion IQ®, it can also be used with other heat presses, small vinyl cutters, printers, and more. Pivoting wheels allow for easy movement around shops or at events, and lock to ensure stability.

- Powder-coated, scratch-resistant, heavy-duty steel
- Holds up to 600 lbs.
- Adjustable height, from 17" to 35"
- Lockable, pivoting wheels

Actual Weight: 122 lbs.

Shipping Weight: 126 lbs.

Dimensions: 37.6"L x 24"W x 17.3"H

Shipping Dimensions: 38.2"L x 24.8"W x 18.11"H



## FOAM COVER PAD

The 4" x 8" pad helps when heat applying dimensional emblems and patches with a heat press. Available in three thicknesses: the thicker the emblem, the thicker the pad you use.

---

**1/8" thick 16" x 20"**

---

**1/4" thick 4" x 8"**

---

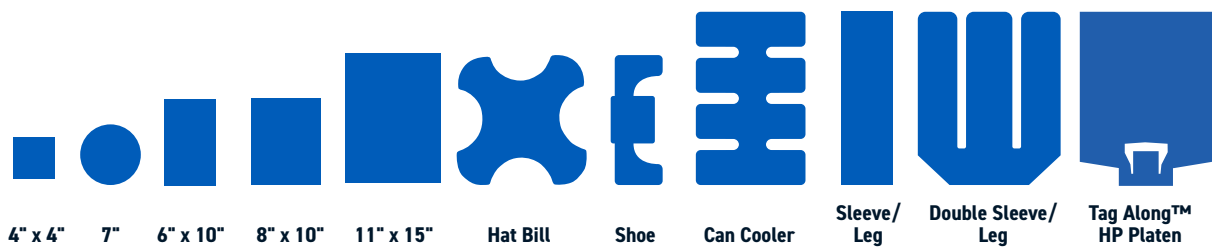
**1/8" thick 4" x 8"**

---



# THE RIGHT PLATEN

## FOR YOUR HEAT PRESS



	4" x 4"	7"	6" x 10"	8" x 10"	11" x 15"	Hat Bill	Shoe	Can Cooler	Sleeve/ Leg	Double Sleeve/ Leg	Tag Along™ HP Platen
<b>DUAL AIR FUSION IQ®</b>	•	•	•	•	•	•	•	•	•	•	•
<b>AIR FUSION IQ®</b>	•	•	•	•	•	•	•	•	•	•	•
<b>FUSION IQ®</b>	•	•	•	•	•	•	•	•	•	•	•
<b>HOVER PRESS™ (16" x 20")</b>	•	•	•	•	•	•	•	•		•	•
<b>AUTO OPEN CLAM (16" x 20")</b>	•	•	•	•	•	•	•	•		•	•
<b>AUTO OPEN CLAM (16" x 16")</b>	•	•	•	•	•	•	•				
<b>AUTO OPEN CLAM (11" x 15")</b>	•	•	•	•	•		•				
<b>THE MAXX® CLAM (16" x 20")</b>	•	•	•	•	•	•	•	•		•	•
<b>THE MAXX® CLAM (15" x 15")</b>	•	•	•	•	•	•	•				
<b>THE MAXX® CLAM (11" x 15")</b>	•	•	•	•	•		•				

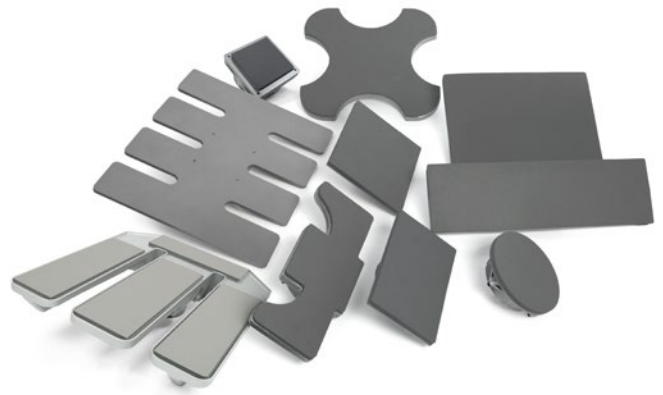
Compatible with heat presses manufactured after 2014. Custom platens available. Call 800-727-8520 for a quote.



## QUICK CHANGE PLATENS

Use interchangeable platens to decorate a wide variety of apparel and accessories. Platens are compatible with Hotronix® and MAXX® brand presses.

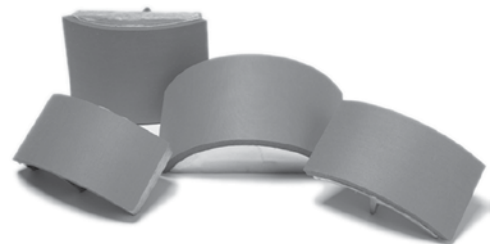
<b>Tag Along HP Platen</b> — double the printing capabilities
<b>4" x 4"</b> — for small garments and accessories
<b>7" Round</b> — for duffel bags
<b>8" x 10"</b> — for tote bags
<b>6" x 10"</b> — for left chest and hoodie pockets
<b>Best Value</b> — Set of 3 (7" Round, 8" x 10", 6" x 10")
<b>MVP 11" x 15"</b> — for women and children's apparel
<b>Shoe 6" x 15"</b> — for athletic footwear
<b>FUSION® Sleeve/Leg 6" x 20"</b> — for long, slender items
<b>Double Sleeve/Leg 16" x 20"</b> — for long, slender items
<b>Can Cooler</b> — for 8 collapsible can coolers
<b>Hat Bill</b> — underside or top



## INTERCHANGEABLE CAP PLATENS

Interchangeable cap platens make decorating hats easy. Whether you have a low-profile or oversized hat, we have a platen that fits. For heat press machines purchased prior to 2012, visit [stahls.com](http://stahls.com).

<b>All Star 2½" x 6½"</b> — for low-profile caps
<b>Rookie 3" x 5½"</b> — for low-crown caps
<b>Slugger 4" x 6½"</b> — for full-crown ball caps
<b>Champ 4" x 8"</b> — for oversized caps
<b>Best Value</b> — Set of 4 (1 each)



## PLATEN COVERS

**Quick Slip Lower Platen Protector** - This fitted cover slips snugly over the bottom platen, making it easy to slide the garments on the platen. It also reduces wear and tear on the lower platen.

<b>6" x 10"</b>
<b>8" x 10"</b>
<b>11" x 15"</b>
<b>15" x 15"</b>
<b>16" x 16"</b>
<b>16" x 20"</b>

**Upper Platen Cover** - This fitted cover slips snugly over the upper platen, protecting it from inks, adhesives, and other residue during the heat printing process.

<b>16" x 20"</b>
------------------

**Silicone Upper Platen Cover** - Greatly reduces heat press imprint on performance wear and other heat-sensitive fabrics such as neoprene and Lycra®/spandex.

<b>16" x 20"</b>
------------------



# CONTACT US

## **STAHL'S' Hotronix®**

One Industrial Park  
Carmichaels, PA 15320  
USA

## **Technical Support**

[hotronix.com/support](https://hotronix.com/support)

## **Customer Service**

[customerservice@hotronix.com](mailto:customerservice@hotronix.com)

## **Replacement Parts**

[hotronix.com/locationsparts](https://hotronix.com/locationsparts)

## **Web**

[hotronix.com](https://hotronix.com)



[STAHL.S.COM](https://STAHL.S.COM) | 800.478.2457



0823



**Proudly Made in the USA**

Hotronix® is a registered trademark of Stahls' Inc. with numerous patents/patents pending. ©Stahls' Inc. 2023